

PRODUCT BROCHURE

# Hardware Equipment Terminals & Industrial PCs

sedApta - Elisa Industriq

# Over 45 Years

Since more than 45 years, sedApta is Manufacturing dedicated equipment to the industry. sedApta - Elisa Industriq is a MES pioneer and leader, offering a global software solution for production monitoring, as well as a range of industrial terminals. Solid and ergonomic, sedApta - Elisa Industriq products meet the expectations of a complex and harsh industrial environment.

Whatever is the workshop or workstation type, sedApta - Elisa Industriq terminals and industrial PC Range will answer the needs of every one.

## French manufacturer of industrial equipments

While implementing your workshop monitoring project, our team, consisting of an Automatism Engineer and a MES Project Manager, will assist you for installing the software solution and the equipment.

Our teams specialized in the industrial problematics will bring know-how and solution to connect your machinery equipment.

## sedApta Commitments:

- **Adaptability:** We are available to answer all adaptation requests to your specific needs.
- **Competitiveness:** sedApta terminals have a price/fonctionnality ratio recognized by all our customers.
- **Assistance:** Our teams give assistance on site or remotely by telecommuting.

## Hardware assistance dedicated to your demand

Hardware assistance is at your service to understand your problem, which will propose an adapted solution to your demand.

## Maintenance

In the framework of the maintenance contract, our team takes care of the hardware maintenance at 100%.

# Terminals and Industrial PCs

High quality graphic & touch screen terminals, are designed by sedApta - Elisa Industriq to connect to the production equipment and operate in a harsh environment. All our terminals are made in France.

The range's advantages:

01. A wide range to adapt to all industrial environments
02. Touch screens : 12", 15", 17", 19" & 21"
03. Built-in or mural casing
04. Design
05. Sturdiness
06. Production Data acquisition card (automation, sensors,...)



# OS 12 4/3

This terminal is used to acquire the production data in a difficult environment and allows the operator to view the required information (drawings, diagrams, comments, instruction sheets settings, procedures, corporate intranet, Workflow absences...)



## Main specifications

12" high luminosity anti-reflective touch screen

High quality metal body designed for harsh industrial environment

IP65 in Front

Available either Ethernet TCP/IP or Wifi (optional)

Wall mounted, Built-in or Base

## Display / screen / cpu

Size: 12" 4/3  
 Native Resolution: 1024x768  
 Processor: 11<sup>th</sup> Gen Intel® Core i5-1145G7E,  
 1.50Ghz – 4.10Ghz Burst, 4-Core 8-Thread, 15W TDP  
 RAM: 16 Go DDR4 extended T°  
 Hard Disk: SSD 512 Go M2 extended T°  
 OS: Windows 11

## Body

Corrosion resistant Metal Body  
 IP65 in front  
 Fixing VESA 100  
 Operation temperature: 0...+50°C  
 Storage temperature: -20...+60°C  
 Non-condensing Humidity: 5...95%

## Capacitive Touch screen

High Quality screen  
 PCAP Technology

## External industrial power supply

12V – 24 Volt Power-in connector 4A

## Connectors

1 port 2.5 GbE  
 1 port 1 GbE LAN  
 4 ports 3.2 GEN 2 USB  
 2 ports RS232  
 2 ports HDMI  
 2 display ports

## Dimensions

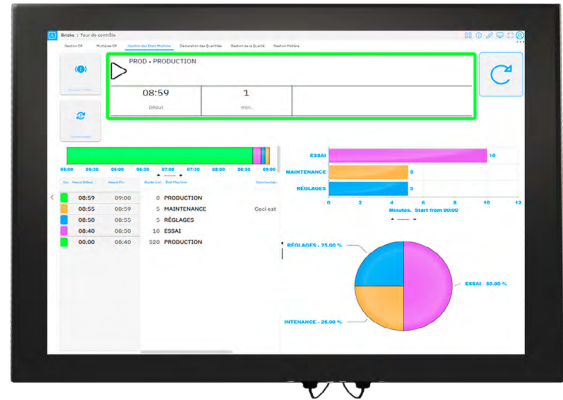
L= 270 mm H= 304 mm P= 67 mm  
 Weight 3,5 kg

## Warranty

1 year parts and labour  
 Factory return

# OS 15 PCAP 4/3

This terminal is used to acquire the production data in a difficult environment / to process and transmit the Information and allows the operator to view the required information (drawings, diagrams, comments, instruction sheets settings, procedures, corporate intranet, Workflow absences...)



## Main specifications

15" high brightness anti-reflective touch screen

High quality metal body designed for harsh industrial environment

IP54

Available either Ethernet TCP/IP or Wifi (option)

Wall mounted or Built-in

A protected connector adapted to the industry

### Display / screen / cpu

Size: 15" 4/3  
 Native Resolution: 1024x768  
 RAM: 8 Go DDR4 extended T°  
 Hard Disc: SSD 256 Go M2 extended T°  
 Windows: 11  
 Processor: Intel® Celeron J6412, 2.00GHz -2.60GHz Burst, 4-Core 4-Thread, 10W TDP

### Body

IP54 (IP 65 in front)  
 Protection: Full IP65 in option  
 Fixing VESA 100  
 Operating temperature: 0... + 50°C  
 Storage temperature: - 20... + 60°C  
 Humidity: 5...95%

### Capacitive Touch screen

High Quality screen  
 PCAP Technology

### External industrial power supply

12V – 24 Volt Power-in connector 4A

### Connectors

2 Ethernet 2.5 GbE  
 3 ports USB 3.2 GEN 2  
 3 ports USB 2.0  
 2 ports RS232  
 2 ports HDMI  
 Radio in option:

- WIFI 2,4 GHz 5 Ghz
- Bluetooth
- BLE

### Dimensions

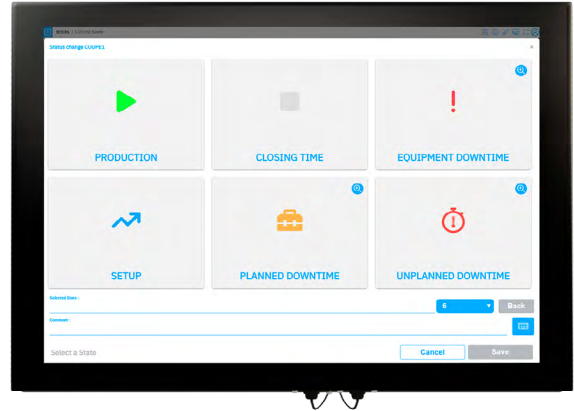
L= 350mm H= 274mm P= 108mm  
 Weight 7 kg

### Warranty

1 year parts and labour  
 Factory return

# OS 15 PCAP 16/9

This terminal is used to acquire the production data in a difficult environment / to process and transmit the Information and allows the operator to view the required information (drawings, diagrams, comments, instruction sheets settings , procedures, corporate intranet, Workflow absences...)



## Main specifications

15.6" high luminosity anti-reflective touch screen

High quality metal body designed for harsh industrial environment

IP54

Available either Ethernet TCP/IP or Wifi (option)

Wall mounted or Built-in

Protected connectors and adapted for industrial environment

### Display / screen / cpu

Size: 15" 16/9  
 Native Resolution: 1920x1080  
 Processor: Intel® Celeron J6412 1.88 GHz 4 core RAM: 8 Go DDR4 extended T°  
 Hard Disc: SSD 256 Go M2 extended T°  
 Windows: 10

### Body

IP54 (IP65 in front)  
 Fixing VESA 100  
 Operating temperature: 0...+50°C  
 Storage temperature: -20 ...+60°C  
 Humidity: 5...95%

### Capacitive Touch screen

High Quality screen  
 PCAP Technology

### External industrial power supply

12V – 24 Volt Power-in connector 4A

### Connectors

2 Ethernet 10/100/1000 and Gb  
 3 ports USB 2.0  
 1 port USB 3.0  
 2 ports RS232 (in option)  
 Radio in option:

- WIFI 2,4 GHz 5 Ghz
- Bluetooth
- BLE

### Dimensions

L= 388mm H= 232mm P= 71,8mm  
 Weight= 4,5 kg

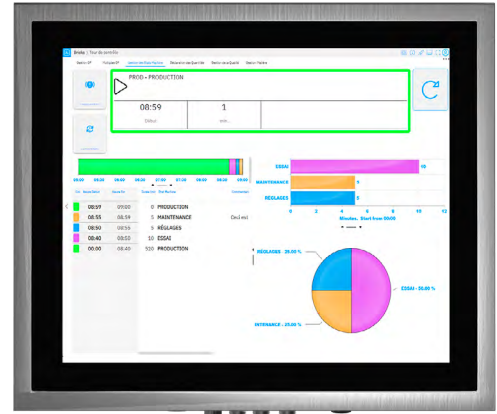
### Warranty

1 year parts and labour  
 Factory return

# OS 17 INOX IP69k 4/3

Specially designed for the food industry and Pharmaceutical, this Fanless industrial terminal in stainless steel 316L is used to acquire the production data in a difficult environment.

The OS 17 INOX allows the display of production information (OEE, production sheets , Documents) In real-time by the operators.



## Main specifications

17" high luminosity anti-reflective touch screen

High quality metal body designed for harsh industrial environment

IP69 K

Available either Ethernet TCP/IP

Wall mounted

Protected connectors and adapted for industrial environment

## Display / screen / cpu

Size: 17" 4/3  
 Native Resolution: 1280x1024  
 Processor: Intel® Celeron J6412, 2.00Ghz - 2.60Ghz Brust,  
 4-Core 4-Thread 10W TDP  
 RAM: 8Go DDR4 extended T°  
 Hard Disk: 256Go M2 extended T°  
 OS: Windows 10 - 11

## Body

INOX 316 L  
 Full IP69K  
 Fixing VESA 100  
 Operating temperature: 0...+50°C  
 Storage temperature: -20 ...+60°C  
 Humidity: 5...95%

## Capacitive Touch screen

High Quality screen  
 PCAP Technology

## External industrial power supply

Power source 100-240 VAC 2A 50-60 HZ

## Connectors

1 port Ethernet 1GbE LAN  
 1 USB port 3.2 GEN 2 in option  
 1 RS232 port in option

## Dimensions

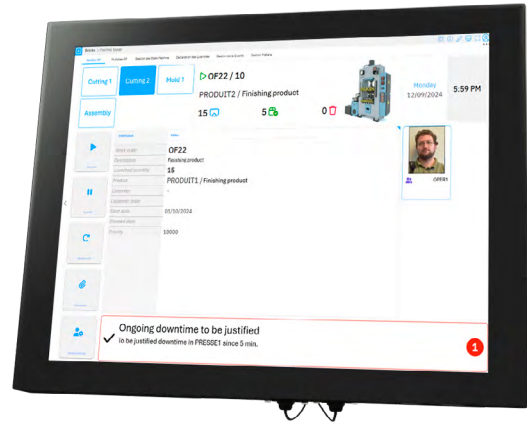
L= 462 mm H= 395 mm P= 72 mm  
 Weight 8.5 kg

## Warranty

1 year parts and labour  
 Factory return

# OS 17 PCAP 4/3

This terminal is used to acquire the production data in a difficult environment / to process and transmit the Information and allows the operator to view the required information (drawings, diagrams, comments, instruction sheets settings , procedures, corporate intranet, Workflow absences...).



## Main specifications

17" high luminosity anti-reflective touch screen

High quality metal body designed for harsh industrial environment

IP54

Available either Ethernet TCP/IP or Wifi (option)

Wall mounted or Built-in

Protected connectors and adapted for industrial environment

### Display / screen / cpu

Size: 17" 4/3  
 Native Resolution: 1280x1024  
 Processor: Intel® Celeron J6412, 2.0GHz –2.60GHz Burst,  
 4-Core 4-Thread 10W TDP  
 RAM: 8 Go DDR4 extended T°  
 Hard Disk: SSD 256 Go M2 extended T°  
 OS: Windows 11

### Body

IP54 (IP65 in Front)  
 Full IP65 in option  
 Fixing VESA 100  
 Operating temperature: 0...+50°C  
 Storage temperature: -20 ...+60°C  
 Humidity: 5...95%

### Capacitive Touch screen

High Quality screen  
 PCAP Technology

### External industrial power supply

12V – 24 Volt Power-in connector 4A

### Connectors

2 ports Ethernet 2.5 GbE  
 3 ports USB 3.2 GEN 2  
 3 ports USB 2.0  
 2 ports RS232  
 2 ports HDMI  
 Radio in option:

- Wifi 2,4 Ghz 5 Ghz
- Bluetooth
- BLE

### Dimensions

L=382 mm H= 314 mm P= 108 mm  
 Weight= 8kg

### Warranty

1 year parts and labour  
 Factory return

# OS 17 INOX PCAP 4/3

This terminal is used to acquire the production data in a difficult environment / to process and transmit the information and allows the operator to view the required information ( drawings, diagrams, comments, instruction sheets settings , procedures, corporate intranet, Workflow absences...)



## Main specifications

17" high luminosity anti-reflective touch screen

High quality metal body designed for harsh industrial environment

IP54

Available either Ethernet TCP/IP or Wifi (option)

Wall mounted or Built-in

Protected connectors and adapted for industrial environment

### Display / screen / cpu

Size: 17" 4/3  
 Native Resolution: 1280x1024  
 Processor: Intel® Celeron J6412, 2.0 GHz - 2.60 GHz Burst,  
 4-Core 4 Thread 10W TDP  
 RAM 8Go DDR4 extended T°  
 Hard Disk: SSD 256Go M2 extended T°  
 OS: Windows 10 - 11

### Body

INOX 316 L  
 IP54 (IP65 front, full IP65 in option)  
 Fixing VESA 100  
 Operating temperature: 0... + 50°C  
 Storage temperature: - 20... + 60°C  
 Humidity: 5... + 95%

### Capacitive Touch screen

High Quality screen  
 PCAP Technology

### External industrial power supply

Power-in connector 4A 12V - 24 Volt

### Connectors

2 ports Ethernet 2.5 GB  
 3 USB ports 3.2 GEN 2  
 3 USB ports 2.0  
 2 RS232 ports  
 2 ports HDMI  
 Radio in option:

- Wifi 2,4 Ghz 5 Ghz
- Bluetooth
- BLE

### Dimensions

L= 382mm H= 314mm P= 108mm  
 Weight= 8kg

### Warranty

1 year parts and labour  
 Factory return

# OS 19 INOX IP69k 16/9

Specially designed for the food industry and Pharmaceutical, this Fanless industrial terminal in stainless steel 316L is used to acquire the production data in a difficult environment.

The OS 19 INOX allows the display of production information (OEE, production sheets , Documents) In real-time by the operators.



## Main specifications

19" high luminosity anti-reflective touch screen

High quality metal body designed for harsh industrial environment

IP69 K

Available either Ethernet TCP/IP

Wall mounted

Protected connectors and adapted for industrial environment

## Display / screen / cpu

Size: 19" 16/9  
 Native Resolution: 1920x1080  
 Processor: Intel® Celeron J6412, 2.0GHz Burst, 4-Core  
 4-Thread 10W TDP  
 RAM: 8Go DDR extended T°  
 Hard Disk: 256 Go M2 extended T°  
 OS: Windows 10 - 11

## Body

INOX 316 L  
 Full IP69K  
 Fixing VESA 100  
 Operating temperature: 0...+50°C  
 Storage temperature: -20 ...+60°C  
 Humidity: 5...95%

## Capacitive Touch screen

High Quality screen  
 PCAP Technology

## External industrial power supply

Power source, 100-240VAC 2A 50-60Hz

## Connectors

1 port Ethernet 1GbE LAN  
 Option:

- 1 port USB 3.2 GEN 2
- 1 port RS232

## Dimensions

H= 520mm L= 327 mm P= 72 mm  
 Weight: 7.95 kg

## Warranty

1 year parts and labour  
 Factory return

# OS 19 INOX PCAP 4/3

This terminal is used to acquire the production data in a difficult environment / to process and transmit the information and allows the operator to view the required information ( drawings, diagrams, comments, instruction sheets settings , procedures, corporate intranet, Workflow absences...)



## Main specifications

19" high luminosity anti-reflective touch screen

High quality metal body designed for harsh industrial environment

IP54

Available either Ethernet TCP/IP or Wifi (option)

Wall mounted or Built-in

Protected connectors and adapted for industrial environment

### Display / screen / cpu

Size: 19" 4/3  
 Native Resolution: 1280x1024  
 Processor: Intel® Celeron J6412, 2.0 GHz - 2.60 GHz Burst,  
 4-Core 4 Thread 10W TDP  
 RAM 8Go DDR4 extended T°  
 Hard Disk: SSD 256Go M2 extended T°  
 OS: Windows 10 - 11

### Body

INOX 316 L  
 IP 54 (IP65 front, full IP65 in option)  
 Fixing VESA 100  
 Operating temperature: 0... + 50°C  
 Storage temperature: - 20... + 60°C  
 Humidity: 5... + 95%

### Capacitive Touch screen

High Quality screen  
 PCAP Technology

### External industrial power supply

Power-in connector 4A 12V - 24 Volt

### Connectors

- 2 ports Ethernet 2.5 GB
- 3 USB ports 3.2 GEN 2
- 3 USB ports 2.0
- 2 RS232 ports
- 2 ports HDMI
- Radio in option:
  - Wifi 2,4 Ghz 5 Ghz
  - Bluetooth
  - BLE

### Dimensions

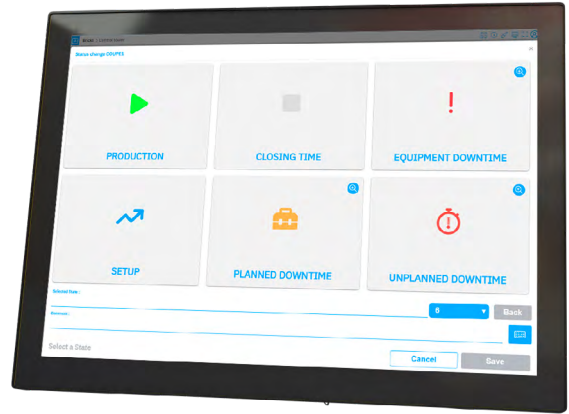
L= 382mm H= 314mm P= 108mm  
 Weight= 8kg

### Warranty

1 year parts and labour  
 Factory return

# OS 19 PCAP 16/9

This terminal is used to acquire the production data in a difficult environment / to process and transmit the Information and allows the operator to view the required information (drawings, diagrams, comments, instruction sheets settings , procedures, corporate intranet, Workflow absences...)



## Main specifications

19" high luminosity anti-reflective touch screen

High quality metal body designed for harsh industrial environment

IP54

Screen rotation

Available either Ethernet TCP/IP or Wifi (option)

Wall mounted or Built-in

Protected connectors and adapted for industrial environment

### Display / screen / cpu

Size: 19" 16/9  
 Native Resolution: 1920x1080  
 Processor: Intel® Celeron J6412 1.88 Ghz 4 Core  
 RAM: 8Go DDR4 extended T°  
 Hard Disk: SSD 256 Go M2 extended T°  
 OS: Windows 10 - 11

### Body

IP54 (IP65 in Front)  
 Full IP65 in option  
 Fixing VESA 100  
 Operating temperature: 0...+50°C  
 Storage temperature: -20 ...+60°C  
 Humidity: 5...95%

### Capacitive Touch screen

High Quality screen  
 PCAP Technology

### External industrial power supply

12V – 24 Volt Power-in connector 4A

### Connectors

- 3 Ethernet 10/100/1000 and Gb
- 3 ports USB 2.0
- 1 port USB 3.0
- 2 ports RS232 (in option)
- Radio in option:
  - Wifi 2,4 Ghz - 5Ghz
  - Bluetooth 3.0HS/2.1EDR
  - BLE

### Dimensions

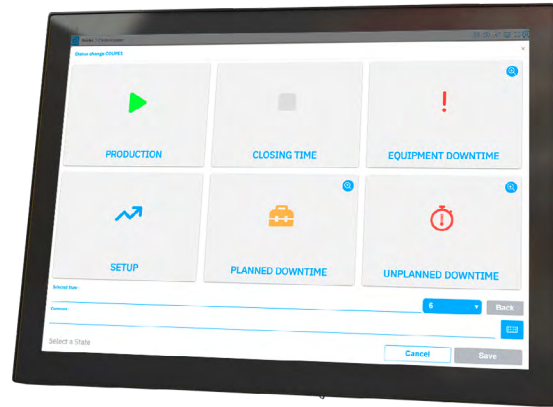
L= 470mm H= 295mm P= 110mm  
 Weight= 8,65 kg

### Warranty

1 year parts and labour  
 Factory return

# OS 21 PCAP 16/9

This terminal is used to acquire the production data in a difficult environment / to process and transmit the Information and allows the operator to view the required information (drawings, diagrams, comments, instruction sheets settings , procedures, corporate intranet, Workflow absences...)



## Main specifications

21" high luminosity anti-reflective touch screen

High quality metal body designed for harsh industrial environment

IP54

Screen rotation

Available either Ethernet TCP/IP or Wifi (option)

Wall mounted or Built-in

Protected connectors and adapted for industrial environment

### Display / screen / cpu

Size: 21" 16/9  
 Native Resolution: 1920x1080  
 Processor Intel® Celeron J6412 1.88 Ghz 4 Core  
 RAM: 8Go DDR4 extended T°  
 Hard Disk: SSD 256 Go M2 extended T°  
 OS: Windows 10 - 11

### Body

IP54 (IP65 in front)  
 Full IP65 in option  
 Fixing VESA 100  
 Operating temperature: 0...+50°C  
 Storage temperature: -20 ...+60°C  
 Humidity: 5...95%

### PCAP Touch screen

High Quality screen  
 PCAP Technology

### External industrial power supply

12V – 24 Volt Power-in connector 4A

### Connectors

- 2 Ethernet 10/100/1000 and Gb
- 3 ports USB 2.0
- 1 port USB 3.0
- 2 ports RS232 (in option)
- Radio in option:
  - Wifi 2,4 Ghz - 5Ghz
  - Bluetooth 3.0HS/2.1EDR
  - BLE

### Dimensions

L= 529 mm H=363 mm P= 110 mm  
 Weight 9,80 Kg

### Warranty

1 year parts and labour  
 Factory return

# Processor

## Processor CORE I5

- 11<sup>th</sup> Gen IntelCore i5-1145G7E, 15WSOC Processor
- Supports DDR4-3200SODIMM up to 64GB Total
- Intel Iris Xe Graphics, HD Audio, 3W Amplifier
- 2 \* hdmi, 2 \*dp.lvs/eDP, up to 4\* 4K or 2 \* 8K (DP)
- 1 \*Intel i255-LM 2.5GbE, 1 \* Intel i219-LM 1GbE
- 1 \* SATA36Gb/s, 1 \* M.2 PCIE 4.0x4 NVME, M.2 2230
- 4 \* USB 3.2Gen2 (10Gb/s), 4 \* USB 2.0 Ports
- 12-24VDC-InJackor

## Processor CELERON

- Long-Life Embedded Class Industrial Motherboard with Planned Lifecycle Through Q1'2036
- Intel CeleronJ6412Quad-Core, SOC Processor
- Supports DDR4-3200SODIMM up to 32GB Total
- 2 \* Intel 2.5GbE LAN, HD Audio
- Up to 3 Displays, 2 \* HDMI 4K@60Hz, eDP/LVDS
- 1 \* SATA3, M.2 SATA/PCIE 3.0X22242/2280
- M.2 3042 with SIM Card Slot, M.2 2230 for WIFI
- 3 \* USB 3.2Gen2, 7 \* USB 2.0 Ports
- 12V-24VDC-InJackor



# Mobile terminals

## TC22/TC27 Mobile Computers

### Display

6.0 in. color Full High Definition+ (1080 x 2160); LED backlight; 450 Nits; Corning® Gorilla® Glass

### Imager Window

Corning® Gorilla® Glass

### Network Connectors

TC22: WLAN, WPAN; TC27: WWAN, WLAN, WPAN

### Interface Ports

USB 3.1 (Bottom Type C)—Super Speed (host and client); 2-pin or 8-pin rear connector

### CPU

Qualcomm® 5430 hex-core, 2.1 GHz

### Memory

6 GB RAM/64 GB UFS Flash;  
8 GB RAM/128 GB UFS Flash

### Operating Temp.

14°F to 122°F/-10°C to 50°C

### WLAN Radio

IEEE 802.11 a/b/g/n/ac/d/h/i/r/k/v/w/mc/ax;  
2x2 MU-MIMO, Wi-Fi 6E (802.11ax), Wi-Fi™ certified;  
Wi-Fi™ 6 Certified, Dual Band Simultaneous; IPv4, IPv6

## Data Capture

### Scanning

SE55 1D/2D Advanced Range Scan Engine with IntelliFocus™ technology; SE4710 1D/2D Scan Engine

### Camera

Rear camera 16 MP; front camera 5 MP

### NFC

ISO 14443 Type A and B; Sony FeliCa<sup>11</sup> and ISO 15693 cards; Card Emulation via Host; Contactless payment support; ECP1.0 and ECP2.0 polling support; Apple VAS certified

### UHF RFID

RFD40 UHF RFID Sled; RFD90 Ultra-Rugged UHF RFID Sled



## Mobile Android PDA

- PDA Industriel Durci
- Android 4.2.2 OS
- Quad-core Cortex™-A7 1.2GHz processor
- 5.5" display PDA
- Micro USB port and microSD card slot (max. 32 GB)
- 4GB ROM/1GB RAM
- Barcode Scanner 1D/(2D Option)
- GSM 850/900/1800/1900
- Dimensions (L x W x H) 160.9 mm x 85.4 mm x 28.85 mm
- Weight: 386g
- Charging Bay (optional)
- IP65
- Drop protection: 1,5 mm



## Mobile Terminal INTERMEC CK3

- Microprocesseur: Intel® XScale PXA270, 520 MHz
- RAM: 12 MB
- Flash ROM: 256 MB H3
- Micro SDIO Slot
- Screen 3,5" (89 mm) QVGA (240 x 320 pixels)

### Keyboard Options

- Complete Alphanumeric 51 keys

### Connectivity Options

In real time or deferred; cabled or wireless

- Bar codes reader 10 et 20
- Enabled RFID Reader
- Operating temperature: -10°C à + 50°C
- Storage temperature: -20°C à +70°C
- Environment Protection (impermeability, dust/water:
- Compliance IP54
- Shock resistant: repeted falls from 1,50 m height on steel or concrete
- Humidity: 5 to 95 % (without condensation)



# Accessories

## Bar Codes Reader Datalogic Quick Scan

- Reading up to 60 cm
- Multi interface: USB, RS-232, Keyboard Wedge
- Reading Angle 42°
- Protection IP52
- Reading confirmation 325 scans /second
- 1D & 2D Laser Bar code reader depending on the model
- Resistant to falls up to 1,8m high on concrete



## Reinforced Bar Code Reader Datalogic Power Scan

- Reading up to 60 cm
- LCD screen 4 lines x 16 characters
- Multi interface: USB, RS-232, Keyboard Wedge
- Reading Angle 42°
- Wireless reader up to 46m from the base in RF technology and up to 100m in BT (Bluetooth)
- IP54 protection in RF technology and IP 65 in BT 433 scans/seconds
- Reading confirmation
- 1D & 2D Laser Bar code reader depending on the model
- Resistant to falls up to 2 m high on concrete



## Scanner

- Reader Type: CCD Sensor
- Reading distance (Resolution 13 mil) 0-50 mm
- Reading speed: 150 scans / second
- Reading width: 110 mm
- Shock resistance: 1m
- Connects to screens / keyboards, USB, RS232 or TTL
- 1D & 2D Laser Bar code reader depending on the model



## HID® OMNIKEY® 5427CK

The OMNIKEY 5427CK Reader supports both low and high frequency credentials and can be operated using Bluetooth and NFC allowing customers to leverage their mobile access credentials to access computer, network or cloud by using their mobile phone. It leverages Secure Identity Object™ (SIO) to offer solutions that are secure, tech-independent and flexible, thus making it ideal for mixed technology environments



- CCID support: Native CCID implementation supporting Windows, Linux and Mac operating systems
- Keyboard wedge: Fully configurable and programmable functionality with an integrated management console
- Supported contactless cards include iCLASS Seos®, iCLASS SE®, iCLASS®, MIFARE® Classic, MIFARE DESFire® 0.6/EV1, Indala Prox, and HID Prox
- Broad credential support: Dual frequency for both low and high frequency credentials simultaneously, including Apple's Enhanced Contactless Polling (ECP) application to support credentials in Apple Wallet
- Supports ISO 14443 A&B, and ISO 15693
- Up to 848 Kbps transmission rate

## Light Column

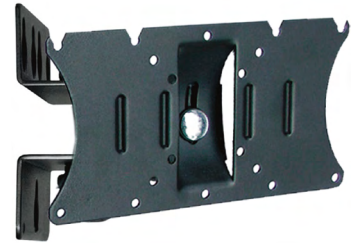
- Up to 5 alert levels
- Up to 5 alert levels Enabled to combine continuous light, flashing light stroboscope or acoustic alarm
- Easy to implement



# Stand/Supports

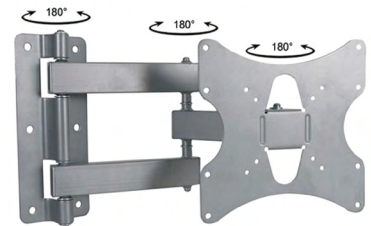
## VESA Fixation 50/75/100/200 x 100

- Support screens 10 to 30»
- Maximum weight of 20 kg
- Supports two adjustment directions: up / down and right / left  
Support to set directly into the wall
- Wall distance : 90 mm



## VESA Fixation 50/75/100/200 x 100

- Supplied with the necessary plugs and screws for assembly and mounting
- Dimensions LCD/plasma : 17"-30" / 43-76 cm
- Max. 30 kg
- Weight : 2.5 kg



# Want to learn more?

sedApta, part of Elisa Industriq, is a global leader in Manufacturing Operations Management (MOM) and Supply Chain Management (SCM), with over 30 years of experience supporting manufacturing companies in optimizing planning, execution and performance across their operations.

## About Elisa Industriq

Elisa Industriq brings together the proven capabilities of sedApta, Polystar, camLine, CalcuQuote, Gridle, and TenForce. Together we stand as a global leader in operational intelligence. Our solutions deliver immediate visibility, predictive capabilities, and measurable improvements, empowering organizations to confidently navigate complexity and drive operational excellence across manufacturing, telecommunications, energy, supply chain, and safety operations.

## Contact us

[elisaindustriq.com/sedapta](https://elisaindustriq.com/sedapta) · [marketing@sedapta.com](mailto:marketing@sedapta.com)

© Elisa Industriq. All rights reserved.  
Trademarks are the property of their respective owners.

Information is subject to change without notice. Compiled from public sources and internal analysis.

Subject to typographical errors.